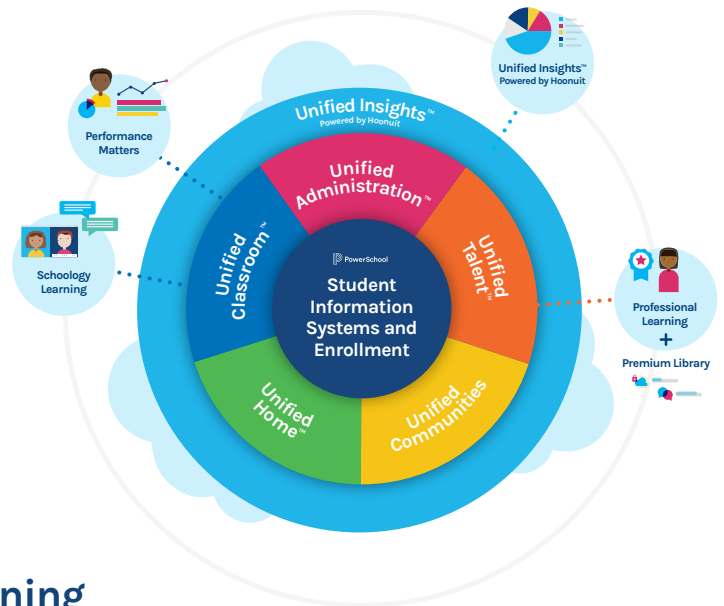


Accelerated Learning Gains Package



Our comprehensive and ongoing approach to addressing unfinished learning and accelerating learning gains for years to come.

Addressing unfinished learning with personalized, whole-child instruction is not a new need—it existed long before COVID and will continue to be a focus. However, due to so much lost instructional time, many schools and districts are in greater need than ever of a comprehensive, long-term strategy to provide students with the support they need to excel. PowerSchool’s combination of **interoperable solutions, ongoing PD, and strategic partnerships** can provide that comprehensive approach to accelerating learning gains.



Interoperable Solutions

Nobody wants another username or password. Thanks to PowerSchool, **teachers and students can go to just one place** for interactive instruction, access to meaningful data, personalized professional learning for staff, and even pre-made content available from day one.



Recommended Partnerships

PowerSchool is establishing **partnerships with industry leaders** to help take student success to the next level.

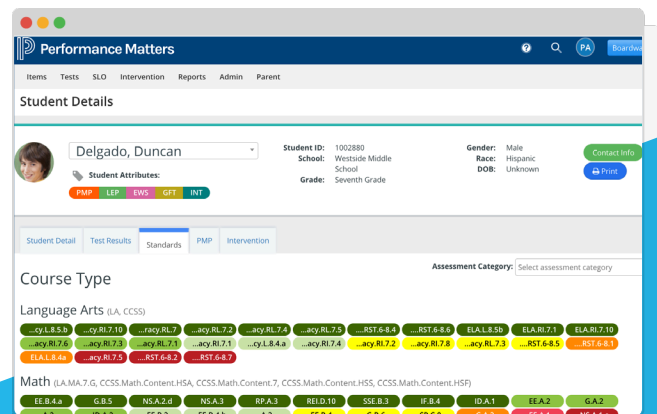
For example, **T-Mobile’s Project 10Million** initiative strives to help solve the homework gap, bridge the digital divide, and support hybrid learning with free internet and mobile hotspots.



Ongoing Professional Development

The research is clear, ongoing, sustained professional development models increase the transfer of new knowledge into actual classroom practice.¹ **Our Accelerated Learning Gains Academy provides the ongoing PD** that teachers need throughout the year to better accelerate learning gains.

¹Joyce and Showers, Student achievement through staff development (3rd ed.). Alexandria, VA: Association for Supervision and Curriculum Development.



At the end of the 2020-2021 school year:

For mathematics, students are likely to have **lost 5 to 9 months of learning**, on average, by the end of this school year.

Students that are BIPOC could be **6 to 12 months behind**, compared with **4 to 8 months** for white students.

Source: McKinsey & Company, COVID-19 and Learning Loss – Disparities Grow and Students Need Help, December 2020

Identify Student Instructional Needs

Provide teachers with the tools they need to identify students' ongoing instructional needs throughout the entire school year.

Track Improvement with Connected Data

Connect all of your student data to better understand progress over time and to inform ongoing support for students and staff.

Simplify Professional Learning for Staff

With PowerSchool, staff get the support they need to continuously improve thanks to built-in PD tools and the ability to schedule year-round live learning sessions with the PowerSchool Customer Education Team.

