

Using Schoolology LMS to Keep Up with the Pace of Growth—and Student Demand

OLENTANGY LOCAL SCHOOLS



Olentangy Local Schools, located in a rural suburb of Columbus, Ohio, is the state’s fastest-growing K-12 district. It’s not surprising that they’ve turned to technology to help them deal with the rapid growth. Schoolology, an online learning management and social learning tool, is making a big impact on the district.

Keith Pomeroy, Director of Technology, had been searching for a platform to facilitate the delivery of online courses for the district’s Olentangy Teaching Academy (O2A). He was immediately drawn to Schoolology because of how simple it is to use. He says, "One look at it and I thought it was fantastic. I immediately knew how to use it because it’s so much like the social media programs teachers and students are using outside of the classroom."



AT A GLANCE

Challenge

- A LMS to facilitate online learning to handle rapid district growth and changing needs

Products & Solutions

- Schoolology

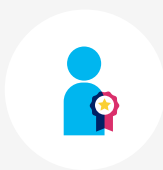
Results

- Students and teachers quickly adopted the LMS
- Online courses are now offered, helping the district implement a flipped classroom model
- LMS accessibility allows students to learn 24/7

Olentangy Local Schools • Columbus, Ohio



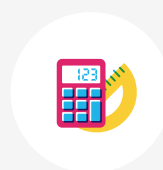
21,679
Students



854
Teachers



15
Elementary Schools



5
Middle Schools



3
High Schools

Student Engagement Tips the Scale in Favor of Schoology

Keith knew Schoology was the right solution for them when student use of Schoology voluntarily grew from 500 to 1,600 students while he and his colleagues were investigating several other learning management and social learning tools. "Our students had spoken. This was the platform they wanted to use. I was impressed with Schoology, but student adoption made it an easy decision to move forward. I have never seen any product be adopted as quickly as Schoology," he says.

Up and Running in No Time

Teachers across the district have embraced Schoology and quickly integrated it into their teaching strategies. According to Keith, "Schoology has the lowest barrier to professional development I have ever seen in my 17-year career in educational technology. Most teachers know how to use it without any training. Even the more complex functionality is intuitive. We do offer professional development, but mostly teachers have logged in and started using it on their own."

Growing with the District's Needs

Schoology will be an integral part of the district's move towards offering fully online courses through O2A, which the district hopes will help save the expense of building a new high school. In addition to online courses, Schoology has helped teachers implement a flipped classroom model. They're able to easily upload videos or other content for students to review at home.

"Schoology is available to students 24/7," says Keith. "With Schoology, they can delve deeper into content faster and easier than they could have before. Schoology has had a huge impact on our students compared to other technologies. The device doesn't matter. Students can access Schoology wherever they are on whatever devices they have—laptop, desktop, iPad, or even smartphone. It extends learning."

“Students can access Schoology wherever they are on whatever devices they have—laptop, desktop, iPad, or even smartphone. It extends learning.”

KEITH POMEROY
Director of Technology
Olentangy Local Schools

Find out how Schoology puts collaboration at the heart of learning by connecting the people, content, and systems that fuel education.

Visit www.schoology.com.

